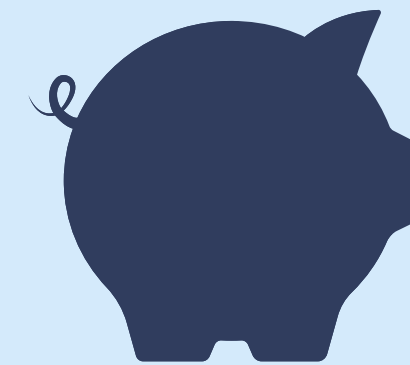


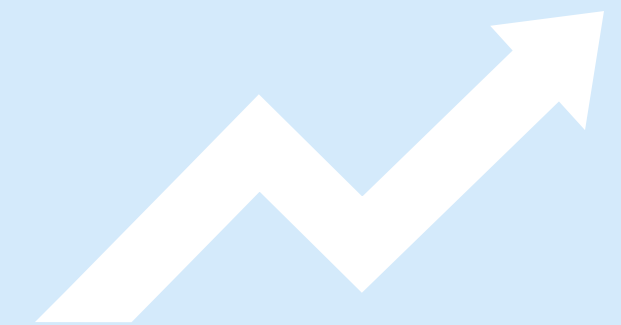
Lesser & Co case study

Resulted in over
£50k of savings
across 2 years

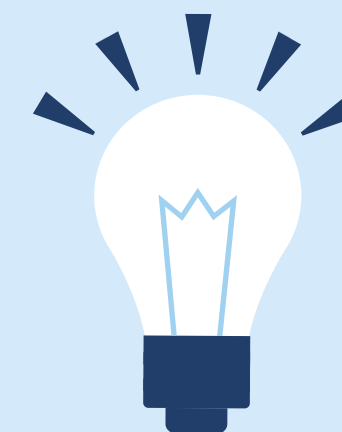
£50k



Client came to us with
no tax advice and huge
potential for savings!



Was paying extremely high personal tax at the additional rate, this is close to 60% between corporation tax and dividend tax (massive tax %). Large amounts were owed to HMRC, cash flow was an issue, business profitable but nothing organised so needed more structure.



We identified she had two sons paying tax at the basic rate whom she funded, this saved masses amounts of corporation tax and personal tax.



We allocated them shares which **saved tax and also gave more flexibility** with a specific alphabet share structure.